

6GSUBST15 HIGH VOLUME TRASH

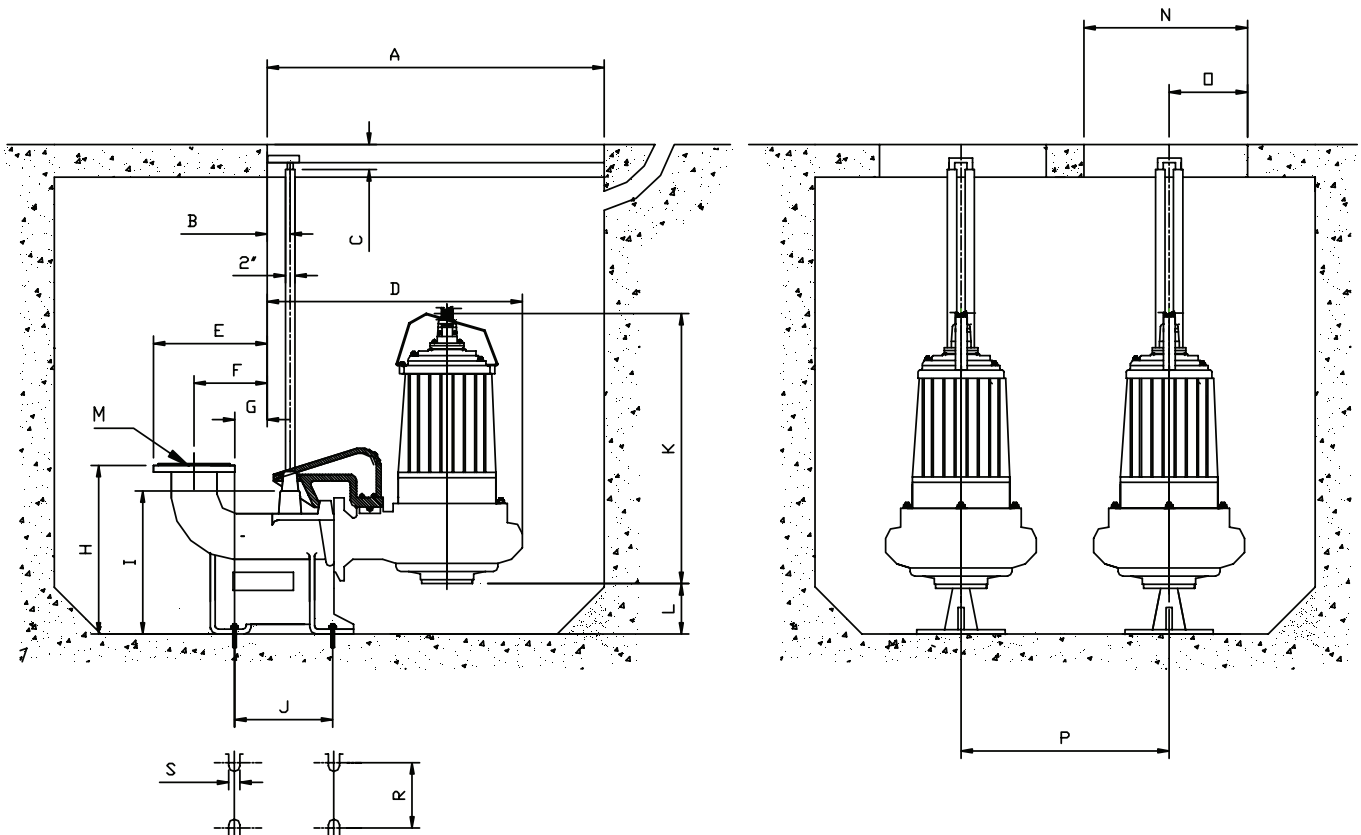


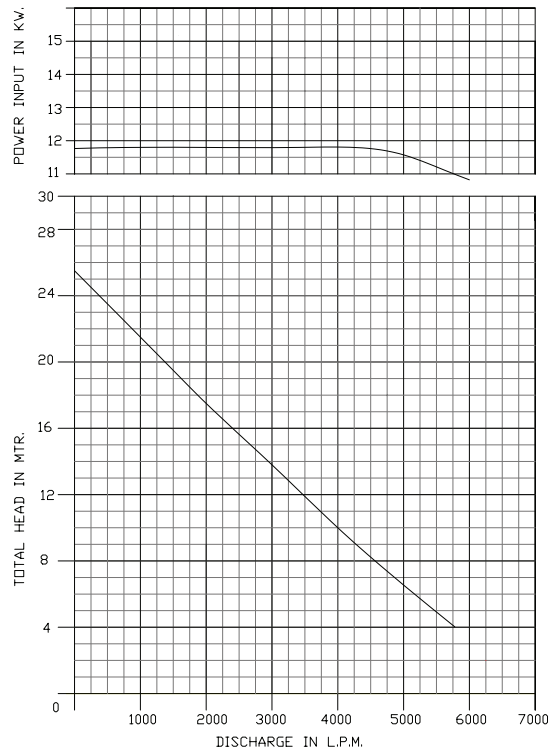
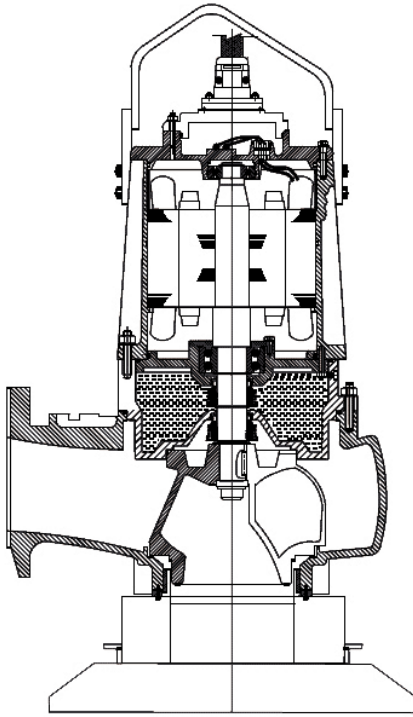
Global Pump® portable electric submersible pumps are ideal for stationary wet pit (P type) and mobile wet pit (S type) installation.

The Model 6GSUBST15 pump with 6" (150 mm) flange or hose and a 15 hp (11 kW) motor is ideal for medium volume, medium head applications.

STATIONARY (SEMI PERMANENT) WET PIT INSTALLATION

| A | B | C | D | E | F | G | H | I | J | K | L | M | N | O | P | R | S |
|------|----|-----|-----|-----|-----|-----|-----|-----|-----|-----|-----|-----|-----|-----|-----|-----|----|
| 1200 | 85 | 130 | 765 | 390 | 215 | 139 | 510 | 435 | 250 | 950 | 125 | 150 | 850 | 425 | 950 | 200 | 23 |





SPECIFICATIONS

| | |
|---------------------------------------------|-------------------------------------------------------------------------------------------------------------------------------------------------------------------------------------------------|
| Size | 6" (150 mm) |
| Power | 15 hp (11 kW) |
| Max Flow | 1520 gpm (345 m ³ /h) |
| Max Head | 85' (26 m) |
| Motor | 4-pole induction continuous rated motor with squirrel cage rotor. Bi-metallic switches (thermal) embedded in stator winding to protect against overheating. Stator insulation class 'H' (180°C) |
| Speed (motor) | 1,750 RPM @ 60 Hz, 1,450 RPM @ 50Hz |
| Power Rating (motor) | 15 hp @ 60 Hz, 7.5 kW @ 50 Hz Full Load |
| Current FLA (motor) | 20 Amps @ 460v, 16 Amps @ 400v |
| Solids Handling | 4" (100 mm) |
| Max. temperature of the pump liquid (motor) | 104°F/40°C |
| Max. start/stop per hour (motor) | 15 |
| Power Supply | 3 phase, 50/60 Hz, AC Supply. Available in any voltage frequency combination (208/220/230/380/415/460/575/1,000V) |
| Power Cable | 50' (15 m) length standard |
| pH Range | 6 - 11 |
| Submergence | Submergence below liquid surface max. 33' (10 m) |
| Weight (approx. w/o cable) | P Type - 528 lbs. (240 Kg) S Type - 440 lbs. (200 Kg) |

PUMP MATERIAL

| | |
|-------------------|------------------------------------------------------------------------------------------------------------------------------------------------------------------------------------------------------------------------------------------------------------------------|
| Outer Casing | Cast Iron ASTM A48 Class 30 (FG220) |
| Impeller | Cast Iron ASTM A48 Class 30 (FG220) |
| O-rings | Nitrile rubber |
| Hardware | 304 Stainless steel |
| Shaft | 431 Stainless steel |
| Mechanical Seals | Tandem tungsten carbide/tungsten carbide upper and lower |
| Impeller | Nitride-hardened 410SS to 56HRC (Standard) |
| Ball Bearings | Rotor shaft carried in two ball bearings. Double row contact lower bearing capable of carrying high thrust and radial loads. Oversized deep groove single row upper bearing. Bearings enclosed with high temperature grease containing special anti-corrosion additive |
| Power Cable | Waterproof/oil proof, rubber-insulated, neoprene-sheathed copper conductor flexible cable. Type SOOW in North America, EPR in the Middle East and HO7RN in the EU. 6 Core or Control cable with thermal overloads optional |
| Surface Treatment | Primer with epoxy surface treatment coated with black chloric paint |

 **GLOBAL PUMP**

GLOBAL PUMP

10162 East Coldwater Road, Davison, MI 48423

Tel: 810.653.4828 Fax: 810.658.0632

1.866.360.PUMP

www.globalpump.com